

A white robotic hand is shown on the left side of the image, reaching out towards a grid of white diamond shapes. The hand is positioned as if it is about to touch or interact with the grid. The background is a light gray color with a green and gold gradient at the bottom.

keyto

SMART D SERIES

Smart DATA Collectors

SMART PDA DATA COLLECTORS



KT-SMART-D5

KT-SMART-D8

KT-SMART-D15

KT-SMART-D16



KT-SMART-D5

ANDROID 10.0 INDUSTRIAL SMART DATA
COLLECTION DEVICE



KT-SMART-D5





FAST AND ACCURATE DATA SCANNING
SATISFY HIGH INTENSITY INTERNAL AND EXTERNAL FIELD

Speed, distance, light recognition of various bad bar code



IP65
WATER PROOF / DUST PROOF



1.5M DROP RESISTANCE



ANDROID 10.0

The latest android system, faster and more stable operation, more secure and efficient network connection, more perfect and more optimized background processing and storage management.



HIGH-DEFINITION CAMERA

2.0MP Front Camera, Live video recording
8.0MP Back Camera AF and Flashlight



HIGH CAPACITY BATTERY LIFE

4500 mAh large battery, the device can work normally for more than 8 hours, supporting quick charging technology, greatly reducing the charging time

APPLICATION SCENARIOS

KT-SMART-D5 is suitable for business and supermarket, catering, clothing, warehousing, logistics, data management and other industries



KT-SMART-D5

Industrial PDA Smart Data
Collection Device



OS

Android 10.0



Processor

QuadCore Cortex-
A53 2.0GHz



Memory

3Gb RAM + 32Gb ROM
LPDDR3



Display

4.0 Inch, 800 x 480 (WVGA)
TFT IPS, PCT Multi Touch,
Corning



Communication

4G/3G/2G LTE GMS



Wi-Fi

IEEE 802.11 a/b/g/n/ac
2.4 & 5.0 GHz
Bluetooth 5.0



Card Reader

NFC / NXP PN7150
ISO 14443A&B FeliCa,
Mifare, ISO15693



Card slots

2 x Nano SIM + Micro SD
(Up to 32 GB)



Battery

Li-Ion 4.3V/4500mAh
(Runtime over 11 hours)



Scanner

E3 Engine
Support 1D and 2D Barcodes



Rear camera

Rear Camera 8MP AF /
Front camera 2MP FF



Interface

Type C USB



Peripheral Port

6 Pin POGO Pin OTA,
Micro SD Card, 32GB SDHC
Compatible, Supports UHF



Protect Grade

Tumble – 0.5 M,
Drop - 1.5 M, IP65



Sensors

G Sensor, Proximity Sensor,
Light Sensor and E Compass



Audio

Built-in loudspeaker,
Built-in microphone



Keypad

1 x ON/OFF,
15 x Alphanumeric,
10 x Functional, 4 x Scanning



Navigation

GPS/A-GPS/
Beidou/GLONASS



Certification

CE / CCC/Google GMS/
SRRC /CTA/UN38.3

Accessories:

Single battery docking charger, Extra batteries available

www.menastoretd.com

KT-SMART-D8

ANDROID 11.0 PDA SMART DATA
COLLECTION DEVICE



KT-SMART-D8





Operating Temperature

20°C ~ +55°C



Protection Grade

1.5 m Drop proof

Protection Grade

IP65 Water and Dust proof



APPLICATION SCENARIOS

KT-SMART-D8 is ideal for Intelligent Storage, Digital Logistics, Retail Inventory Query



SMART-D SERIES ACCESSORIES

SMART-D5



- Single battery docking charger
- Extra batteries available

SMART-D8



- Single battery docking charger
- Extra batteries available
- Pistol Grip





OS

Android 11.0



Display

4.0 Inch WVGA TFT IPS
800 * 480 High definition,
Corning, Multi-touch,
support Glove operation



Interface

2 x Nano SIM /
1 x Type C USB Slot



Peripheral Port

6 Pin POGO Pin OTA,
Micro SD Card, 32GB SDHC
Compatible, Supports OTG



Keypad

27 x Keys, 2 x Scan keys,
1 x Volume key,
1 x Function key



Processor

Octa-Core CPU,
4*A53@2GHz +
4*A53@1.5GHz



External Memory

Supports hot plug up
to 32GB



Battery

Li-Ion 3.8V/5200mAh
(Removable)



Protect Grade

Drop - 1.5 M, 1000 Hits
Steel, IP65



Navigation

GPS/A-GPS/
Beidou/GLONASS



Memory

64GB ROM + 4GB RAM
LPDDR4



Communication

4G/3G/2G
IEEE 802.11 a/b/g/n/ac
2.4 & 5.0 GHz
Bluetooth 5.0



Scanner

E3 Engine
Support 1D and 2D Barcodes



Sensors

G Sensor, Proximity Sensor,
Light Sensor and E Compass



Certification

CE / CCC/Google GMS/
SRRC /CTA/UN38.3

KT-SMART-D8

Android 11.0. Industrial PDA
Smart Data Collection Device



Card Reader

NFC / NXP PN7150
ISO 14443A&B FeliCa,
Mifare, ISO15693



Rear camera

Rear Camera 13MP AF /
Front camera 2MP FF



Audio

>93 DB Speaker;
Box silicon mic; Vibrator

Accessories:

Single battery docking charger,
Extra batteries available

www.menastoretd.com

EO&E: Product information and specifications are subject to change
without prior notice

KT-SMART-D15

ANDROID 11.0 PDA SMART DATA
COLLECTION DEVICE



NEW PRODUCTS:

Estimated Launch Date:
Q3 2023

KT-SMART-D16

ANDROID 11.0 PDA SMART DATA
COLLECTION DEVICE

KT-SMART-D15

Android 11.0. Industrial PDA
Smart Data Collection Device



OS

Android 11.0



Processor

Octa-Core CPU,
4*A53@2GHz +
4*A53@1.5GHz



Memory

4GB RAM / 64 GB FLASH



Display

5.45 Inch, 1440 * 720
Resolution



Interface

Type C USB 2.0



Communication

4G/3G/2G
IEEE 802.11 a/b/g/n/ac
Bluetooth 5.0



Battery

Li-Ion 5000 mAh, 3.8V
(Run time up to 12 hours)



Scanner

E3 Professional Engine



Camera

Rear Camera : 13MP AF
Front camera 2MP FF



Peripheral Card Slots

Micro SC (up to 128 GB)



Protect grade

IP65 / 1.5 Drop



Card Reader

NFC / NXP PN7150 /
SO14443A&B, FeliCa,
Mifare, ISO15693



Card Slot

2 x Nano SIM +TF



Sensors

Acceleration sensor / light
sensor / Proximity /
G-sensor / Gyroscope



Audio

Built-in loudspeaker,
Built-in microphone



Navigation

GPS / Beidou / GLONASS



Certification

CE / CCC / Google GMS /
SRRC / CTA / UN38.8

Accessories

Single battery cradle charger /
Batteries

www.menastoretd.com

KT-SMART-D16

Android 11.0. Industrial PDA
Smart Data Collection Device



OS

Android 11.0



Processor

Octa-Core CPU,
4*A53@2GHz +
4*A53@1.5GHz



Memory

4GB RAM / 64 GB FLASH



Display

5.45 Inch, 1440 * 720
Resolution



Interface

Type C USB 2.0



Communication

4G/3G/2G
IEEE 802.11 a/b/g/n/ac
Bluetooth 5.0



Battery

Li-Ion 5000 mAh, 3.8V
(Run time up to 12 hours)



Scanner

E3 Professional Engine



Camera

Rear Camera : 13MP AF
Front camera 2MP FF



Peripheral Card Slots

Micro SC (up to 128 GB)



Protect grade

IP65 / 1.5 Drop



Card Reader

NFC / NXP PN7150 /
SO14443A&B, FeliCa,
Mifare, ISO15693



Card Slot

2 x Nano SIM +TF



Sensors

Acceleration sensor / light
sensor / Proximity /
G-sensor / Gyroscope



Audio

Built-in loudspeaker,
Built-in microphone



Navigation

GPS / Beidou / GLONASS



Certification

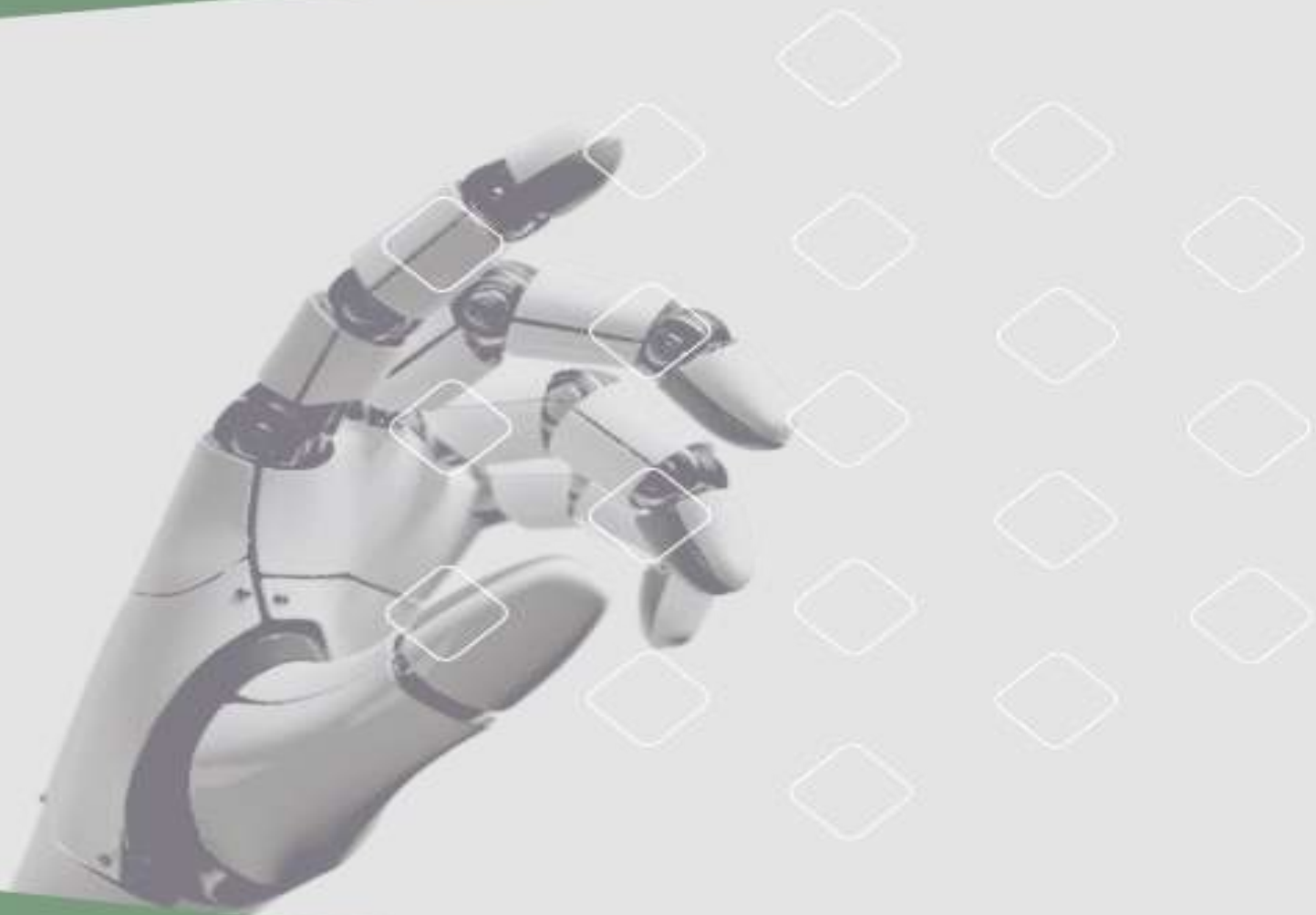
CE / CCC / Google GMS /
SRRC / CTA / UN38.8

Accessories

Single battery cradle charger /
Batteries

www.menastoretd.com

EO&E: Product information and specifications are subject to change
without prior notice



Thank you